









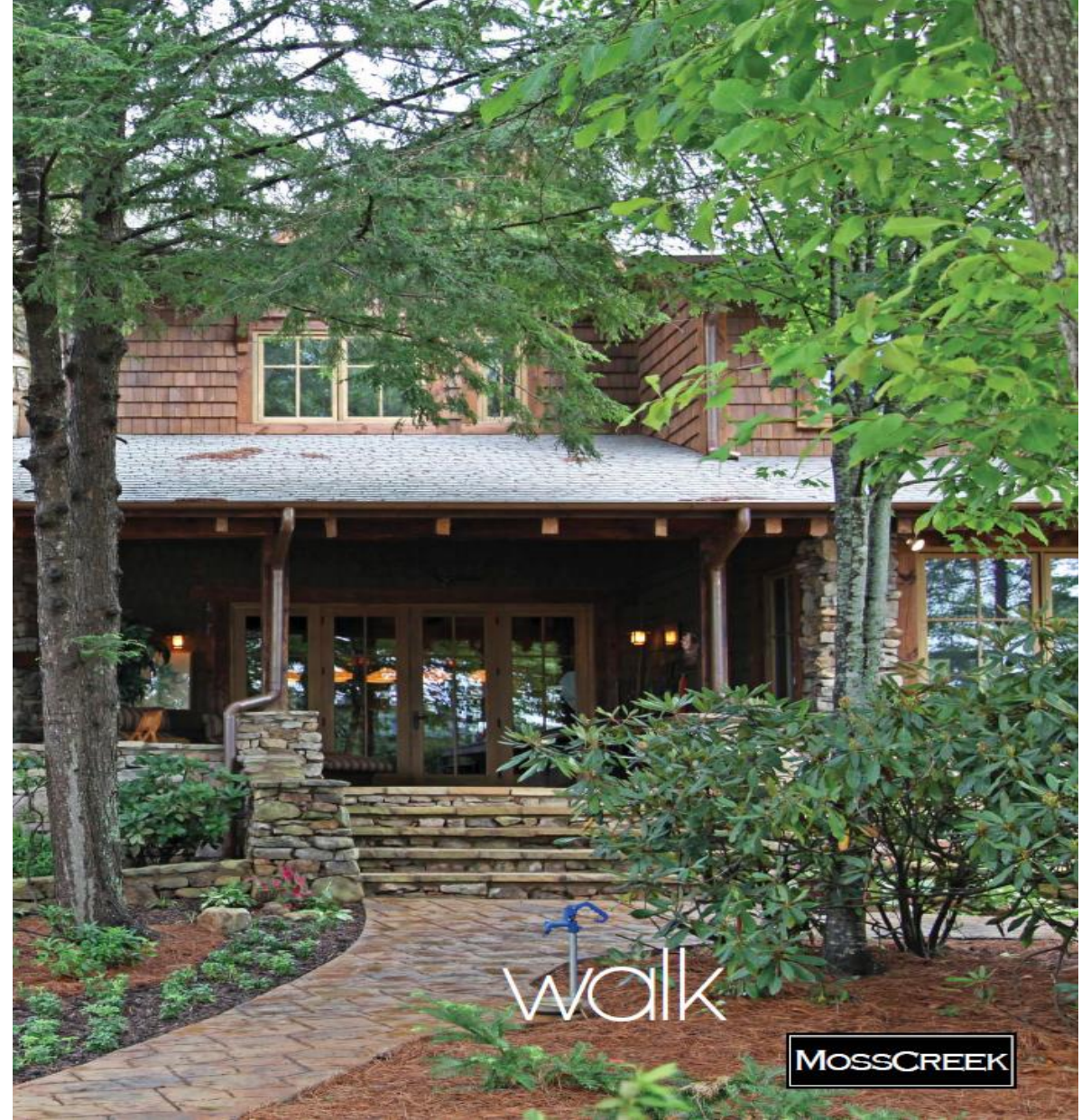




## Sample patio and walk-way down toward the river (please read the below notes)

Note: Your house will be at least 20 feet above the water, so unlike the right hand side photo, your walkway to the river will have steps and not flat

**Note:** Unlike the photo, you can NOT do landscaping in the meadow in front of the river, since HOA will maintain that area, but you can have chairs and table & sit in front of the water.  
www.moss creek.net





## Sample patio facing the river

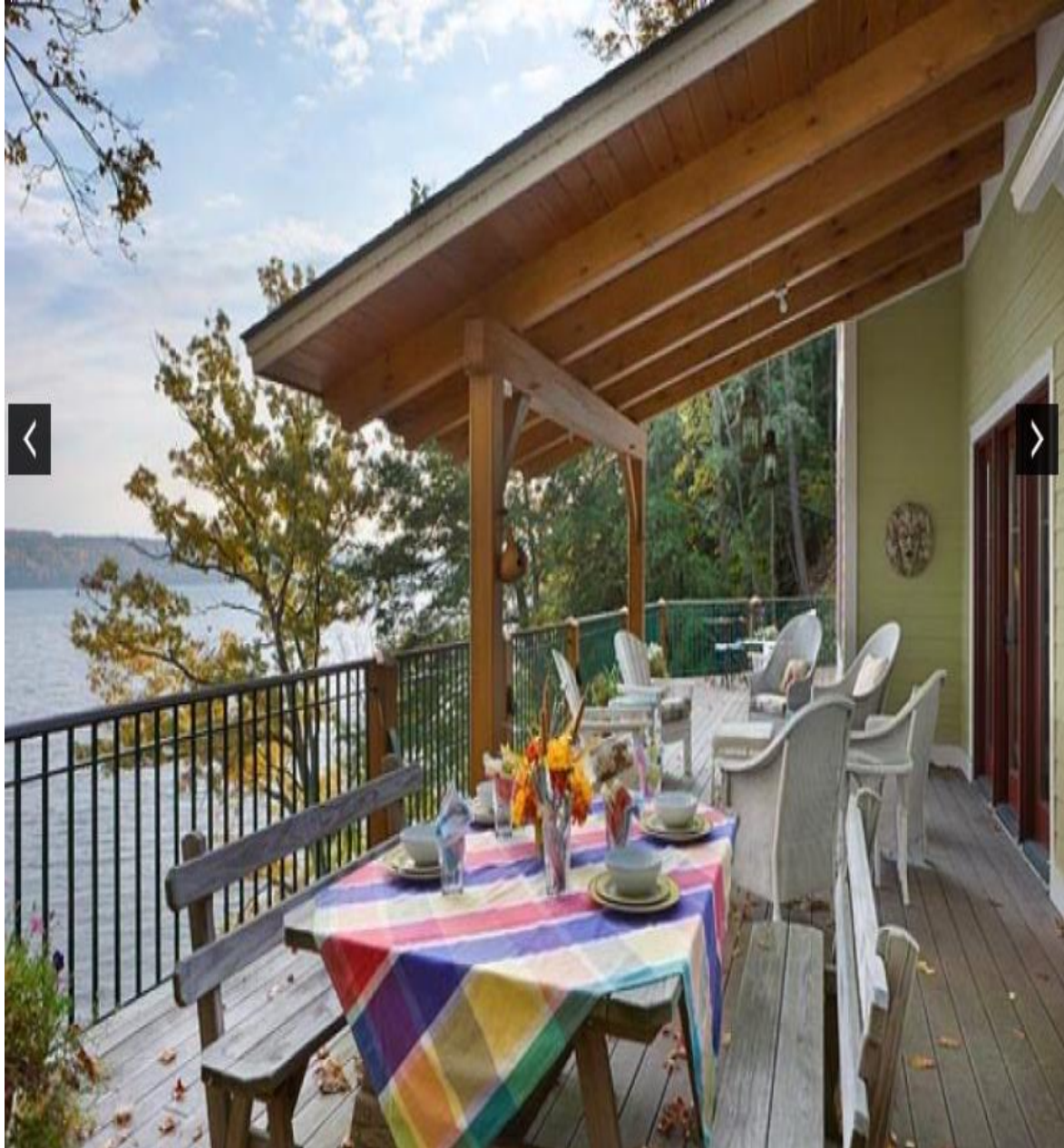
Your house will be at least 20 feet above the water, so your walkway to the river will have steps before it becomes flat  
[www.moss creek.net](http://www.moss creek.net)





## Sample -- Patio facing the Potomac River

[www.timberframe1.com](http://www.timberframe1.com)





Other Ideas





For 2500 sq. feet; 3 bed. 2.5 bath, 3 car garage.  
<http://www.timberframe1.com/woodhouse-timber-frame-videos/knoxville-tn-retirement-home>

## Knoxville TN Retirement Home





For around less than 3,000 sq. feet.

This side is facing the river  
[www.logangatetimberhomes.com](http://www.logangatetimberhomes.com)





River View  
[www.logangatetimberhomes.com](http://www.logangatetimberhomes.com)





## River View

[www.logangatetimberhomes.com](http://www.logangatetimberhomes.com)





River View  
[www.logangatetimberhomes.com](http://www.logangatetimberhomes.com)





River View  
[www.logangatetimberhomes.com](http://www.logangatetimberhomes.com)





River View  
[www.logangatetimberhomes.com](http://www.logangatetimberhomes.com)





## River View

[www.logangatetimberhomes.com](http://www.logangatetimberhomes.com)





This side is facing the river  
[www.logangatetimberhomes.com](http://www.logangatetimberhomes.com)





This side is facing the river  
[www.logangatetimberhomes.com](http://www.logangatetimberhomes.com)





This side is facing the river  
[www.logangatetimberhomes.com](http://www.logangatetimberhomes.com)





River View  
[www.logangatetimberhomes.com](http://www.logangatetimberhomes.com)





River View, depending on your design  
[www.logangatetimberhomes.com](http://www.logangatetimberhomes.com)





River View  
[www.logangatetimberhomes.com](http://www.logangatetimberhomes.com)





River View  
[www.logangatetimberhomes.com](http://www.logangatetimberhomes.com)





River View, depending on the design  
[www.logangatetimberhomes.com](http://www.logangatetimberhomes.com)





# Central PA Lake Home / <http://www.timberframe1.com/woodhouse-timber-frame-videos/central-pennsylvania-lake-home>







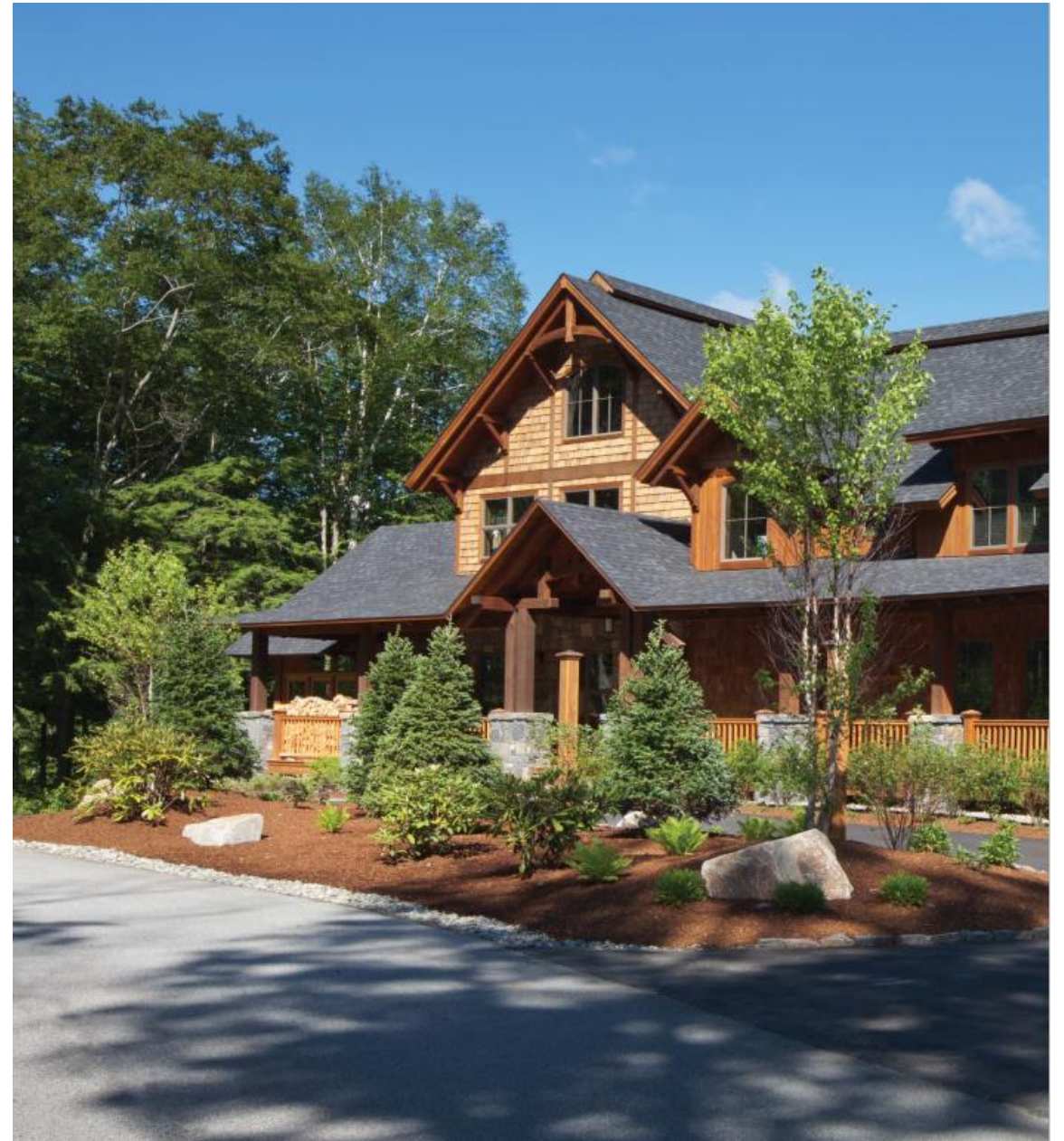


## Colorado Front Range Retirement Home





outside timber looklike, inside optional  
[www.moss creek.net](http://www.moss creek.net)





Outside finishing lookalike, inside optional  
[www.moss creek.net](http://www.moss creek.net)





Outside timber lookalike, inside optional  
[www.moss creek.net](http://www.moss creek.net)





Outside timber lookalike, inside optional  
[www.timberframe1.com](http://www.timberframe1.com)



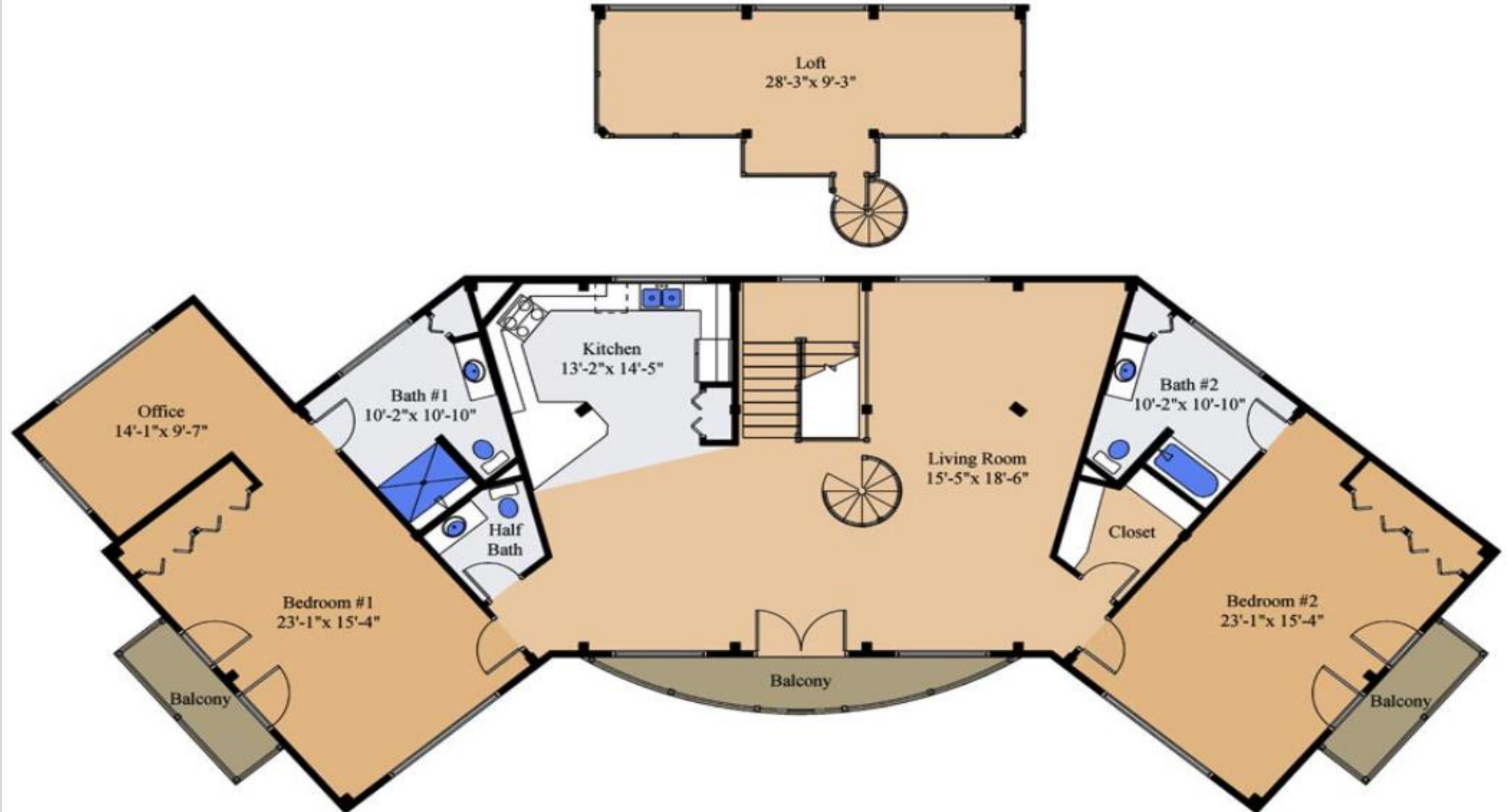


Seneca - Carriage Homes Series / 2730 sqft / [www.timberframe1.com](http://www.timberframe1.com)



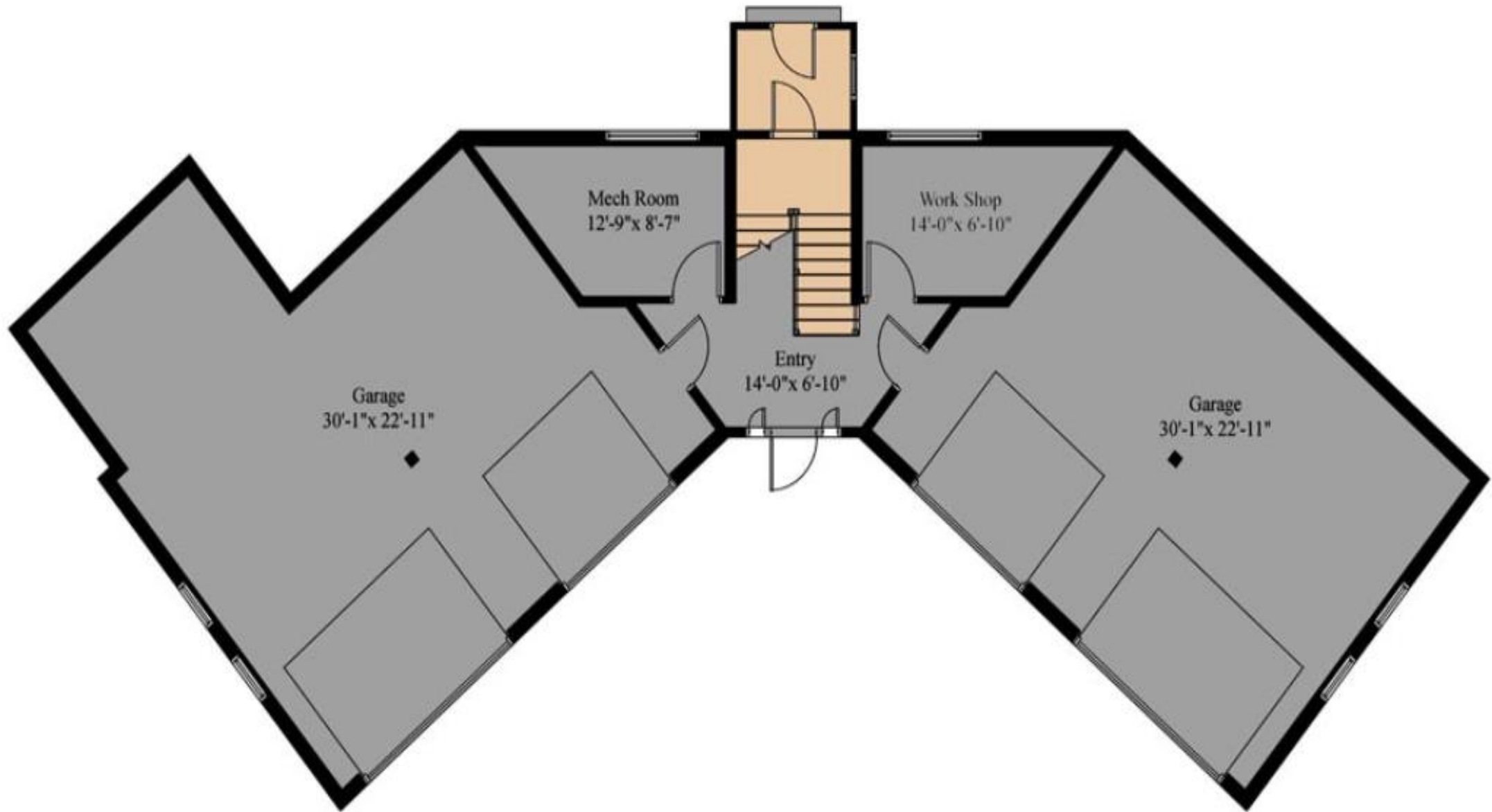


Living Space is 2<sup>nd</sup> floor





# 1<sup>st</sup> floor floor





Knoxville TN Retirement Home

















































































