

# One Perfect Location





WV Whitening Neck

# Potomac Overlook

65 miles from Tyson's Corner VA

West Virginia

Maryland

Virginia

Frederick

Linganore-Bartonsville

Mt Airy

Charles Town

Montgomery

Gaithersburg

Eesburg

Rockville

Loudoun

Sterling

Reston

Silver Spring

District of Columbia

Chantilly

Fairfax

Arlington

Annandale



Potomac River

Casa Om Potomac

Whiting's Neck  
Equestrian Cent...

Yankauer Nature  
Preserve

12

5

Scrabble Rd

SCRABBLE

Sundogs Bed and  
Breakfast

Scrabble



In iPhone navigation, enter intersection of

**Whitings Neck Rd & Carlyle Rd**

Or

**Whitings Neck Rd & Scrabble Rd**



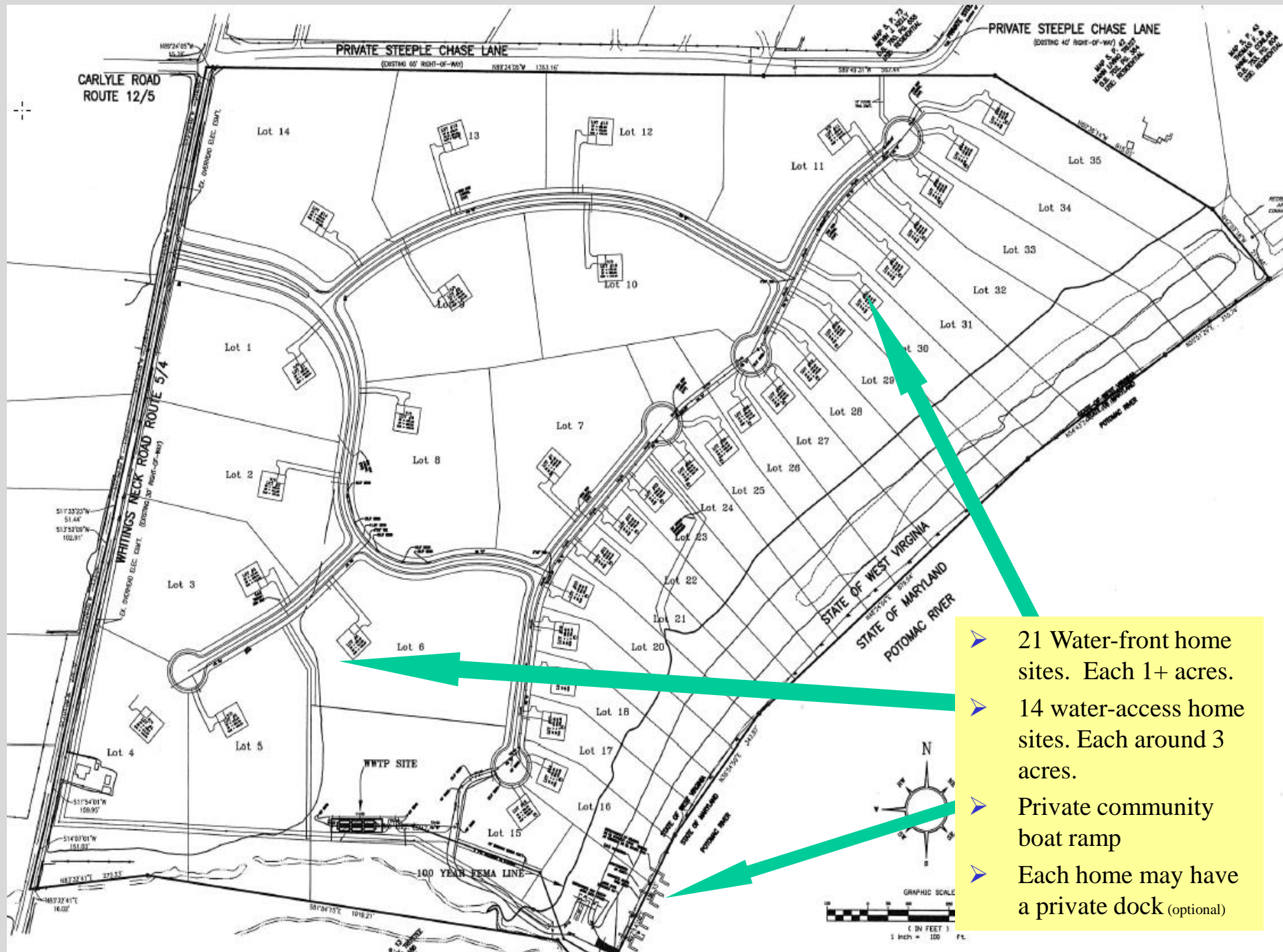


If you are having trouble locating Potomac Overlook Estates feel free to put

**Yankauer Nature Preserve** in your GPS  
Once passing Yankauer Nature Preserve

**Potomac Overlook Estates** is  $\frac{1}{4}$  of a mile  
up the road.





- 21 Water-front home sites. Each 1+ acres.
- 14 water-access home sites. Each around 3 acres.
- Private community boat ramp
- Each home may have a private dock (optional)





Fishing





Family Fun





Evening walk





Nature walk minutes walk from your home.









**A stream passes along the side of the community and pours into Potomac**





14 of the lots have this sample view, and are around 3 acres.



# Potomac Overlook Estates School District Information

- **Bedington Elementary**  
Kindergarten, First Grade, Second Grade
  - 149 Bedington Road | Martinsburg, WV 25404  
304.274.2535 | Fax: 304.274.3957  
[lwehmeyer@k12.wv.us](mailto:lwehmeyer@k12.wv.us)
- **Potomack Intermediate**  
Third Grade, Fourth Grade, Fifth Grade
  - 5308 Williamsport Pike | Martinsburg, WV 25404  
304.274.6592 | Fax: 304.274.6876  
[lcbrown@k12.wv.us](mailto:lcbrown@k12.wv.us)
- **Spring Mills Middle School**  
Sixth Grade, Seventh Grade, Eighth Grade
  - 255 Campus Drive | Martinsburg, WV 25404  
304.274.5030 | Fax: 304.274.3598  
[lkbrown@k12.wv.us](mailto:lkbrown@k12.wv.us)
- **Spring Mills High School**  
Ninth Grade, Tenth Grade, Eleventh Grade, Twelfth Grade
  - 499 Campus Drive | Martinsburg, WV 25404  
304.274.5141 | Fax: 304.274.5144  
[pstegall@k12.wv.us](mailto:pstegall@k12.wv.us)





## WELCOME TO SHEPHERDSTOWN

Shepherdstown, the oldest town in what is now West Virginia was incorporated as Mecklenburg in 1762, but was renamed Shepherd's Town in 1798 in honor of its founder Thomas Shepherd. From the French and Indian War to the Civil War the town has been at the epicenter of American History. Shepherdstown was the jumping off point for the Bee Line march, the first large contingent of southern volunteers to hike overland in record time to reinforce George Washington's fledgling Continental Army around Boston.

The town's claim to be the birthplace of the steamboat is based upon the invention of a self propelled boat by James Rumsey, who demonstrated the boat before town residents in 1787. George Washington appointed Rumsey to be the first superintendent of the Potomac Company formed in 1785 to build a bypass canal at the Great Falls of the Potomac.

While Shepherdstown was not directly involved with the 1862 battle of Antietam, less than five miles away, the town became an impromptu hospital for General Robert E. Lee's retreating army of Northern Virginia.

Today, Shepherdstown is a vibrant college town situated on high bluffs overlooking the Potomac River. The town is protective of its past, as the whole town is a historic district. The streets and parks of the town reflect its history and its appealing architecture and colonial look inspires both residents and visitors. In combining the past with the present, Shepherdstown maintains a cosmopolitan atmosphere where restaurants, hand made arts and crafts, theatre festivals, outdoor recreational shops, coffee bars and natural food shops welcome one and all.

### For more information:

#### Corporation of Shepherdstown

104 N. King Street  
P.O. Box 248 • Shepherdstown, WV 25443  
304-876-2312  
[www.shepherdstown.us](http://www.shepherdstown.us)

#### The Rotary Club of Shepherdstown

P.O. Box 603 • Shepherdstown, WV 25443  
[www.shepherdstownrotary.org](http://www.shepherdstownrotary.org)

#### Shepherdstown Business Association

P.O. Box 1456 • Shepherdstown, WV 25443

#### Shepherdstown Visitors Center

Entler Hotel –  
Corner of German and Princess Street  
304-876-2768  
[www.shepherdstownvisitorscenter.com](http://www.shepherdstownvisitorscenter.com)

## SPECIAL EVENTS

A town rich in history and nestled in bucolic terrain, Shepherdstown is known for its performing arts, outdoor activities and street festivals. The following are some reasons to come visit this unique town. Check websites for dates & announcements.

#### Holiday Parades (year 'round)

[www.shepherdstownvisitorscenter.com](http://www.shepherdstownvisitorscenter.com) - Parades down the center of the historic district - Homecoming, Easter, May Day, July 4th & Christmas.

#### Shepherdstown Opera House (year 'round)

[www.operahouselive.com](http://www.operahouselive.com) - Offering the finest in films and music since 1910.

#### Friends of Music Concert Series (during school year)

[www.sufom.org](http://www.sufom.org) - World-class musical performances

#### Full Circle Theater Company (year 'round)

[www.fullcircletheaterco.org](http://www.fullcircletheaterco.org) - Community theater

#### Back Alley Garden Tour (May) - [www.backalleygarden.org](http://www.backalleygarden.org)

A walking tour of Shepherdstown's gardens & points of interest.

#### Shepherdstown Street Fest (June)

[www.shepherdstownstreetfest.org](http://www.shepherdstownstreetfest.org) - This festival includes live music, vendor booths, kid-friendly activities & a beer garden.

#### Contemporary American Film Festival (CATF) (July)

[www.catf.org](http://www.catf.org) - Annual festival of new plays by American playwrights in rotating repertory on the campus of Shepherd University.

#### Over the Mountain Studio Tour (July & November)

[www.studiotourwv.org](http://www.studiotourwv.org) - Artists and craft workers open their studios and workshops to the public.

#### Soto Voce Poetry Festival (October)

[www.sotovocepoetryfestival.com](http://www.sotovocepoetryfestival.com) - Workshops and presentations by noted national and local poets reading from their works.

#### Freedom's Run (October) - [www.freedomrun.org](http://www.freedomrun.org)

Five races - full marathon, half marathon, 10k, 5k, 1 mile fun run - that run through four national parks.

#### American Conservation Film Festival (ACFF) (November)

[www.conservationfilm.org](http://www.conservationfilm.org) - Over 50 films from a diverse group of conservation filmmakers from around the world.

#### Christmas in Shepherdstown (December)

[www.christmasinshepherdstown.com](http://www.christmasinshepherdstown.com) - Holiday festivities with tree lighting, carolers, Santa, parades, musical events, parade, shopping & sleigh rides.

#### The Historic Shepherdstown Museum

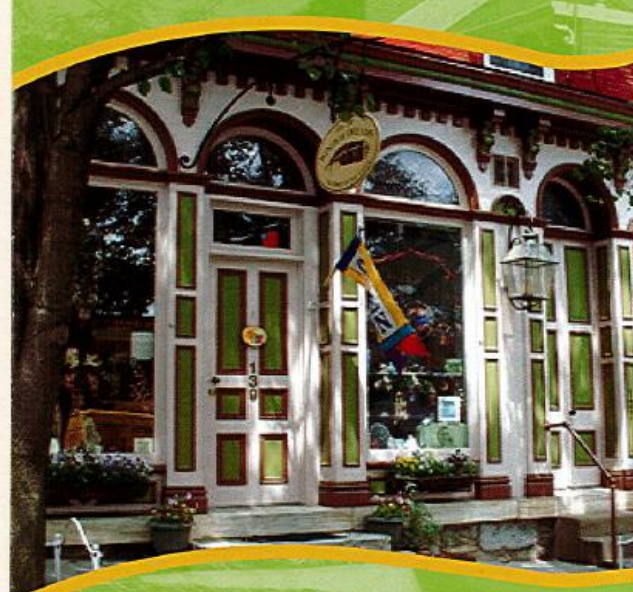
The museum is open from 11:00 am to 5:00 pm on Saturdays and 1:00 to 4:00 pm on Sundays from April through October and the two weeks of Christmas in Historic Shepherdstown. Admission is \$4 for Adults, students and children free. Mention our website and receive half off your admission. Anyone who wants to, can do research in the museum archives, on Mondays and Wednesdays from 9:30 am until 12:00 noon—only by appointment made by calling 304-876-0910.

For more information on the Canal Towns Partnership,  
[www.canaltowns.org](http://www.canaltowns.org)

The Canal Towns Partnership is a collection of communities in Maryland and West Virginia dedicated to offering services and amenities to visitors. We are grateful for support for the program. Other Hagerstown-Washington The Allegheny Trail Alliance and Trailbook, the C&O Canal Association and CSX Corporation.

PHOTOS BY JUDY OLSEN

## SERVICES & EVENTS



Shepherdstown, 10 minutes scenic drive, from your home

*Your Gateway to the C&O Canal Experience!*



## Visitor Information

33	Shepherd University	876-5000
51	Visitor Center	876-2786
34	Police Station	876-6036
34	Town Hall	876-2312
67	Post Office	876-2370

## Lodging

1	Bavarian Inn (wifi)	876-2551
7	Clarion Hotel (wifi, atm)	876-7000
3	Comfort Inn (wifi)	876-3160
2	Thomas Shepherd Inn (wifi)	876-3715

## Food & Drink

1	Bavarian Inn (wifi)	876-2551
40	Betty's Restaurant (atm)	876-6080
24	Bistro 112 (wifi)	876-8477
53	Blue Moon Café (wifi)	876-1920
29	China Kitchen	876-6620
55	Devonshire Arms (wifi)	876-9277
63	H-Mart	876-8484
32	Hypnocooffee (wifi)	(540) 810-0076
19	Kazu Cuisine	876-8798
48	Lost Dog Coffee	876-0871
25	Maria's Taqueria	876-3333
46	Mecklenburg Inn	876-2126
20	Mellow Moods (wifi)	876-0608
61	Mountaineer Ice Cream	
14	Press Room	876-8777
7	Rumsey Tavern (wifi, atm)	870-7140
8	Shaharazade's (wifi)	876-8100
62	Shepherdstown Liquors	876-2100
30	Shep'town Sweet Shop	876-2432
54	Tommy's Pizza	876-2577
45	Tony's Pizza & Pub (atm)	876-2720
7	Tuscany Grill (wifi, atm)	870-7160
52	Yellow Brick Bank	876-2208
41	The Yorkshire Pub (wifi)	876-1980

## Shops

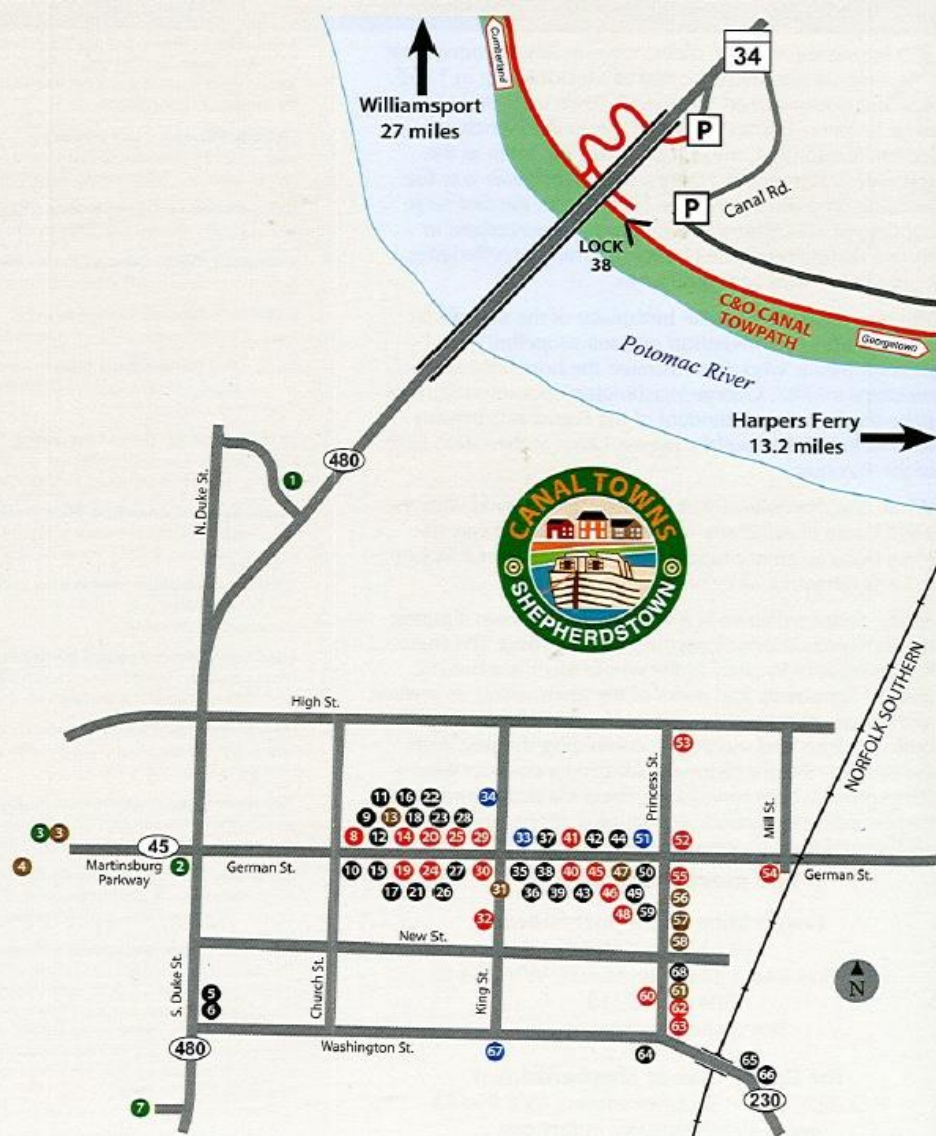
50	AZAD's Rug Emporium	876-3700
44	Blue River Clothing	876-0506
66	The Bridge Gallery	876-2300
18	Conscious Clothes	876-9288
10	D'Accord Boutique	876-8003

42	Dickinson & Wait Gallery	876-0657
64	Encore Apparel in Motion	876-3040
21	Four Seasons Books	876-3486
28	German St Candlery	876-1106
19	The Good Shop	876-8007
39	Grapes & Grains	876-1316
19	Hand of Fatima	876-0250
12	Kelly's White Fly Shoppe	876-8030
68	The Little Pottery House	886-2108
18	Lotus Skincare	876-1900
15	Lullaby Lu	876-9308
36	Needful Things 2	876-0704
27	The Now and Then Shop	876-6300
65	O'Hurley's General Store	876-6907
9	On the Wings of Dreams	876-0244
17	One Two Kangaroo Toys	876-1174
38	Plum	876-2200
16	ReFINEments	876-8599
5	Retropolitan	261-1709
35	Shep'town Paint & Art	876-6053
22	Shep'town Pedal & Paddle	876-3000
37	Sky's the Limit	876-2681
59	The Source	876-1380
26	Steppin' Out Shoes & Such	876-3336
49	Tomandy Design	876-1577
23	Two Rivers Treads	876-1100
43	Village Florist & Gifts	876-3344
6	Yarnability	876-8081

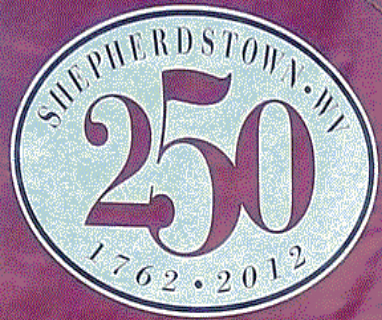
## Other Services

61	Accurate Systems	876-1200
47	Cutting Class Salon	240-6047
3	Food Lion (atm)	876-0601
58	Full Circle Theater	268-7798
16	Hair Heaven	876-9287
60	Jefferson Sec. Bank (atm)	876-9000
57	Off Mane Street	876-6060
3	Rite Aid	876-0505
13	Shep'town Opera House (wifi)	876-3704
4	Shepherdstown Pharmacy	876-9966
31	Shep'town Public Library (wifi)	876-2783
56	Specialty Business Supplies	876-6448
3	Whale of a Wash	

All phone numbers are preceded by (304) unless otherwise noted.







- remember
- celebrate
- imagine



Four  
Seasons  
BOOKS





# HOLLYWOOD *Casino* AT CHARLES TOWN RACES

[Contact Us](#) | [Directions](#) | [Win Loss Statements](#)



LOGIN ►

[CASINO](#) | [PROMOTIONS](#) | [HOTEL](#) | [DINING](#) | [ENTERTAINMENT](#) | [SPECIAL EVENTS](#) | [GROUPS](#) | [CAREERS](#) | [RACING](#) | [ABOUT](#)  
[MARQUEE REWARDS](#) | [TABLES](#) | [POKER](#) | [SLOTS](#) | [HOSTS](#) | [CASINO CREDIT](#) | [JACKPOT WINNERS](#)



Find more tutorials here, click on the table game below to learn how to play

[Blackjack](#) | [Craps](#) | [Mini-Baccarat](#) | [Big Six Wheel](#) | [Pai Gow](#) | [Let it Ride](#) | [Roulette](#) | [Three Card Poker](#) | [Four Card Poker](#) | [Poker](#) | [Texas Hold 'Em](#)



## ACTION PACKED TABLE GAMES

Hollywood Casino at Charles Town Races is the place for exciting Vegas-style casino gaming. With over 100 action packed table games including blackjack, craps, roulette, min-baccarat, Pai Gow Poker, and more. Plus, a 50-table poker room. [Learn more](#)



Property is located 16 miles from casino.

**Hollywood Casino at Charles Town Races, 750 Hollywood Drive, Charles Town, WV 25414**



[Home](#) | [About WNEC](#) | [Our Services](#) | [Summer Camp](#) | [WNEC Newsletter](#) |  
[Schooling Shows](#) | [Show Entry Form](#) | [Meet Our Instructors](#) | [Adult Riders](#) |  
[Horses for sale](#) | [Ponies for Sale](#) | [Pony Partners Classes](#) | [Birthday Parties](#) |  
[Boarding at WNEC](#) | [Directions](#) | [Summer Camp Photos](#) | [Contact Us](#)

## Whiting's Neck Equestrian Center

391 Steeplechase Lane, Martinsburg WV 25404

[Click here to visit us on Facebook for updates, events, and interactions.](#)  
[Become a Fan!](#)

- Horseback riding lessons for beginner through advanced riders in Shepherdstown, Martinsburg, Winchester, Hagerstown and the surrounding area
- Full service horse boarding and training facility
- Specializing in retraining and placing thoroughbred ex-racehorses
- Hunters, dressage, and cross training
- Cross country jumping fields
- Large indoor and outdoor arenas
- Year-round activities including schooling dressage and hunter shows
- Summer Horseback Riding Camp

Horseback riding is an experience that can be enjoyed by people of all ages at Whiting's Neck Equestrian Center (WNEC). Whether your interest is showing hunters, learning to ride dressage, improving your jumping, or simply getting in the saddle for the first time, WNEC has a program for you. We also train horses and retrain retired thoroughbred racehorses. Located in a horseshoe bend of the Potomac River on 30 acres, WNEC is conveniently located near Hagerstown, MD, and Shepherdstown and Martinsburg WV. WNEC has stabling for our own school horses, privately owned horses, large indoor and outdoor arenas, cross country jumping fields, large pastures, and miles of trails along the Potomac River.



Jazmine Barlow and retired racehorse/WNEC star Hangtime rest after summer camp

Adjacent property  
(walk to your neighbor)

### Our Facilities

WNEC has an 80x200' sand/rubber indoor riding arena for all weather riding, a large 100x200' outdoor sand jumping arena, two outdoor jumping fields, a 12 acre grass galloping path with jumps, and over 5 miles of trails along the Potomac River. More







Next door neighbor – Indoor & Outdoor – For kids and Adults





Jazmine Barlow, Sarah Allman, and Taima Ross enjoy their WNEC Mounts

**Whiting's Neck  
Equestrian Center  
391 Steeplechase Lane  
Martinsburg, WV 25404**

**Tel: 304-274-1210**

**Email:**

**[Whitingsneckfarm@earthlink.net](mailto:Whitingsneckfarm@earthlink.net)**

**Show Entries:**

**[whitingsneckeqcenter@yahoo.com](mailto:whitingsneckeqcenter@yahoo.com)**

**E-mail WNEC**

**For new students, we offer a free introductory lesson by appointment. Or come visit us on Sundays at 3:00 pm for \$5 pony rides.**

**Whiting's Neck Equestrian Center \* 391 Steeplechase Lane\* Martinsburg  
\* WV \* 25404  
304 274 1210**



WNEC sits on 30 acres along the Potomac River

**Adjacent property (your neighbor)**



# Colleges and Universities

- Shepherd University
- James Rumsey Technical Institute
- Valley College of Technology
- Shenandoah University
- Frederick Community College
- Lord Fairfax Community College
- Shippensburg University
- Gettysburg College
- Montgomery College
- Mountain State University





# Schools

- Elementary 15 (4,352 enrolled)
- Middle 5 (3,305 enrolled)
- Intermediate 4 (2,227 enrolled)
- Sr. High 3 (3,887 enrolled)
- **St. James School. Outside of Sharpsburg MD. It is a very well respected. 20-25 minutes from your home.**
- Private: Faith Christian Academy (Pre-K-12); Martinsburg Christian Academy (Pre-K-12); Rocky Knoll Seventh Day Adventist Elementary; and St. Joseph's Catholic School (K-8).





# Libraries

- The Martinsburg-Berkeley County Public Library has a circulation of over 147,500 books, over 1,750 video titles, 645 audio books, 270 periodicals, 15 newspapers, and offers a children's library, a young adult collection, a genealogy room, 4 microfilm library, reference CD-Roms and databases, 12 computers with internet access, four word processors, and a statewide inter-library loan program. Branches are located at Hedgesville, Falling Waters, and Inwood, West Virginia.
- Shepherd University Ruth Scarborough Library has 160,538 book titles, 137,765 periodicals; and, is a U.S. Government Depository. Research consultation and computer science services are available.





# Hospitals and Medical Centers

- **City Hospital, Inc.** - has 260 licensed beds. There are 120 physicians and consulting associate members on staff with 5 physician assistants. The hospital offers a wide variety of community wellness programs, sports medicine center, cardiac rehabilitation, and hospice in addition to regular comprehensive medical-surgical departments, emergency room, etc.
- **The Veterans Administration Medical Center** has 99 medical, surgical and psychiatry beds; a 148-bed nursing home; and 312-bed domiciliary. There are approximately 62 full-time staff doctors to service the Center.
- **The Berkeley County Health Department** has a part-time health officer, four nurses and five sanitarians. The Eastern Panhandle Mental Health Center opened in 1975 in downtown Martinsburg.
- **There are three area nursing homes:** Care Haven Center, Heartland of Martinsburg and Canterbury of Shepherdstown. Also available in the Martinsburg area is an assisted living community Balanced Care's Outlook Pointe.



- City Hospital
- Jefferson Memorial Hospital
- Morgan City war Memorial
- Veterans Administration
- Brook Lane Psychiatric Center
- Three Nursing Homes
- Berkeley County Health Department



# Recreation

- 3 Public Golf Courses
- 1 Private Country Club
- 2 Miniature Golf Course
- 3 Health Club
- 17 Public Outdoor Tennis Courts
- 7 Private Outdoor Tennis Courts
- 2 Public Swimming Pools
- 13 Indoor Basketball Courts
- 7 Outdoor Basketball Courts
- 2 Museums
- 4 Soccer Fields
- 21 Baseball/Softball Fields
- 3 Stadiums (Lighted)
- 3 Auditoriums
- 13 Parks
- 23 Playgrounds
- 6 Theaters (1 performing)
- 4 Art Galleries
- 2 Orchestras







164 Shepherd Grade Rd.  
Shepherdstown, WV. 25443  
(304)-876-2551  
info@bavarianinnwv.com

[ACCOMMODATIONS](#) [DINING](#) [EVENTS & PACKAGES](#) [CONFERENCE SERVICES](#) [AREA ATTRACTIONS](#) [DIRECTIONS](#) [CONTACT US](#)



## Golf

Located just ¼ mile from the Bavarian Inn is the private golf course community of Cress Creek Country Club. Only the guests of the Bavarian Inn have the right to play at this exclusive club.

The signature hole # 3 par five will challenge you as it winds towards the elevated green perched overlooking the Potomac River. In total the 18 hole, Par 72 course is a filled with beauty and carefully conserved nature.

Guests or golf groups looking for multiple courses are also welcome to discover Locust Hills Golf Course, only a 20 minute drive from the Inn. Under the same talented management as Cress Creek, Locust Hills Golf Course is rated #5 in West Virginia by Golfweek Magazine, and a 4 star rating by Golf Digest. Allow the staff of the Bavarian Inn to arrange a special package for your golf group.



[Reservations](#)

[Gift Cards](#)

[Golf Info](#)

Attractive mid-week group packages are now available calling our Group Golf Liaison at 304-876-2551 x425.





World famous Bavarian Inn (<http://www.bavarianinnwv.com>), located 8 miles away.



# Golf

- **The Woods Resort** - The resort renowned for "fun and fair" golf now offers the best of both worlds-our 18-hole championship Mountain View course for low handicappers and the new

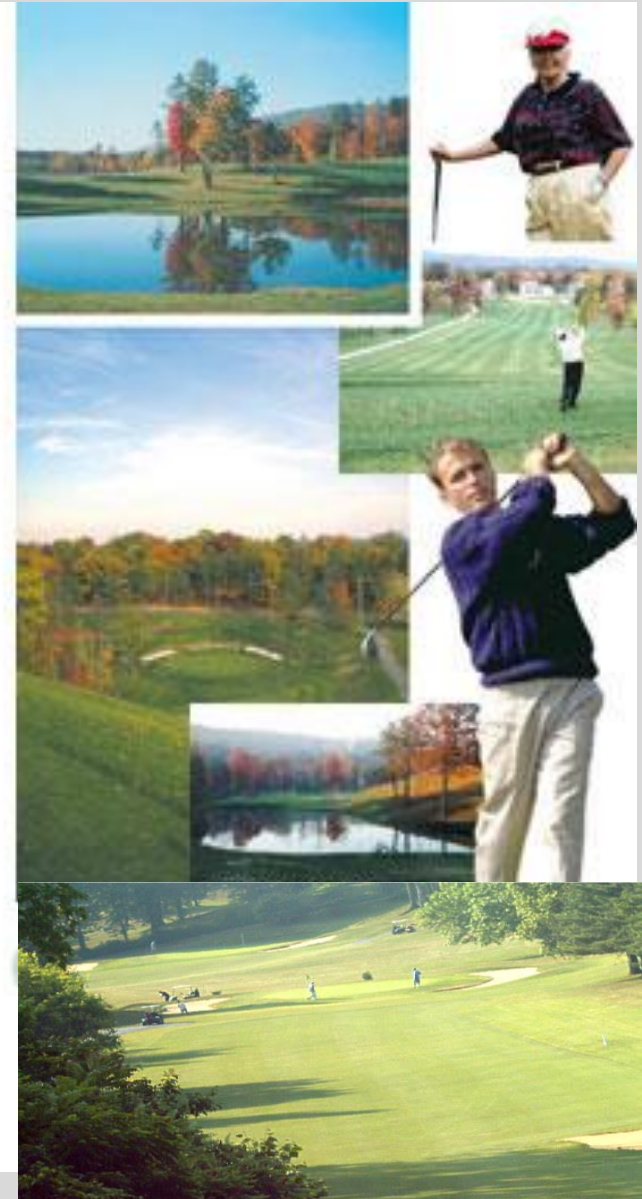
Stony Lick mid-level course for the rest of us!

Mountain Lake Road

Hedgesville, WV 25427

(800) 248-2222 [www.thewoods.com](http://www.thewoods.com)

- **Stonebridge Golf Club.** This is one of the finest golf courses in the eastern panhandle of West Virginia and only minutes from downtown Martinsburg. Enjoy rolling hills and vistas at 1959 Golf Course Road Martinsburg, WV 25401, 304-263-4653, [www.stonebridgegolfcoursewv.com](http://www.stonebridgegolfcoursewv.com)



Enjoy activities, such as nearby golf, spas, horseback riding, skiing, parks, and playgrounds.



# Spas

- **Serenity Day Spa** - Enjoy all over skin treatments with delicious names such as Tango Parafango, or simply enjoy a therapeutic Swedish massage. Serenity Day Spa has an extensive menu of choices to bring about beauty and relaxation. You will find them at 76 Old Mill Road, Martinsburg, WV 25401, 304-263-4200, [www.serenity-dayspa.net](http://www.serenity-dayspa.net)
- **The Sleep Creek Spa** - This destination is perfect for golf widows. Tranquility, pampering and relaxation are all yours while your other half lingers on the green. This full service day spa is located at The Woods Resort off of Route 9 between Martinsburg and Berkeley Springs. (800) 248-2222, [www.thewoods.com](http://www.thewoods.com)





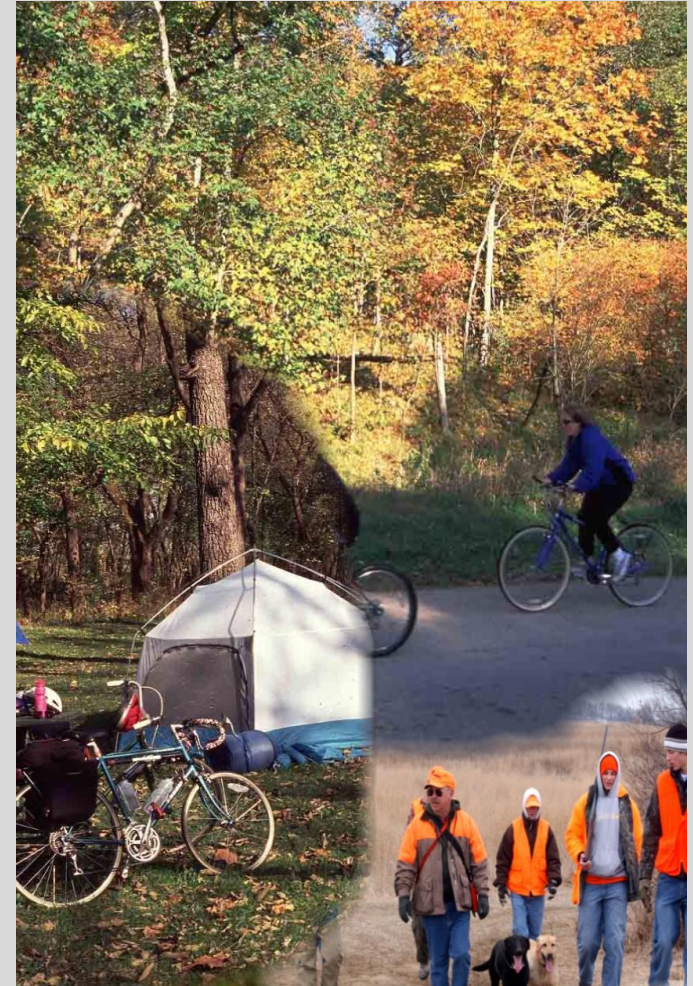
# Outdoor Activities

➤ **Sleepy Creek** - Visit the 28,000 acre Sleepy Creek hunting and fishing preserve, offering miles of scenic hiking and mountain biking trails. Enjoy stunning mountain views, bird watching, fishing and wonderful wildlife. Open Year Round. **Directions:** From I-81, Take Rt. 9 west exit (to Berkeley Springs and Hedgesville) through Hedgesville, about .5 mile past Hedgesville look for Back Creek Valley Road on the left, land marks include crossing a bridge, passing a school on the left and then a church on left, turn left after the church. Bear right onto Sleepy Creek Road, go 1.4 miles, blacktop road will turn into gravel road when you enter the Sleepy Creek Wildlife Management Area

➤ **Willow Run Farm** - Enjoy camping in a tipi or hiking the beautiful countryside for the day. From Martinsburg, West Virginia, take Rt. 9 West through Hedgesville. Turn left onto Back Creek Valley Rd (Rt. 7) .Go 8 miles. Look for Willow Run Farms LLC sign on left at Fourth Bridge Road. 130 Fourth Bridge Road, Hedgesville, WV 25427, 304-754-6643 or 754-3906, [www.willowrunfarms](http://www.willowrunfarms)

➤ **The Woods Resort** - The Woods Resort in Hedgesville, located between Berkeley Springs and Martinsburg on Route 9, is a popular resort, conference center and golf community. Guests and residents enjoy a full-service restaurant, fitness center, a spa, year-round recreation and 27 holes of outstanding golf. [www.thewoodsresort.com](http://www.thewoodsresort.com)

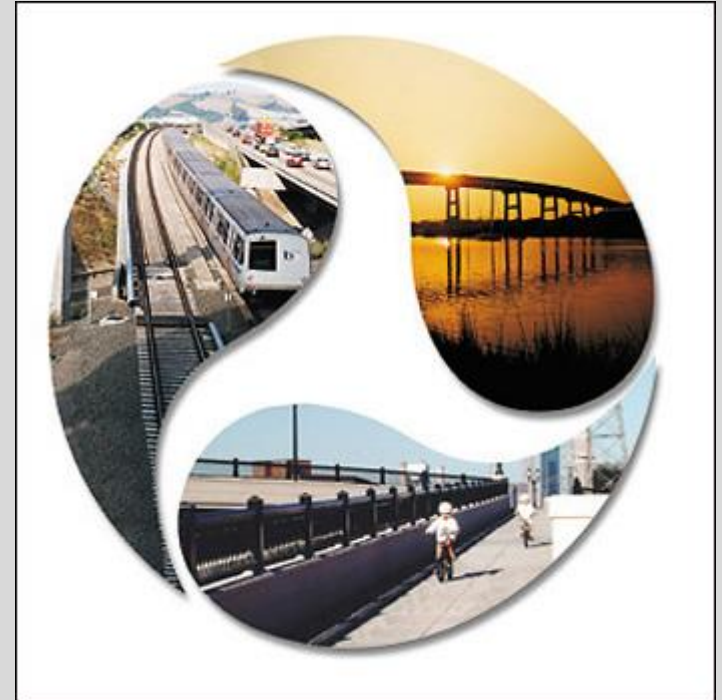
➤ **Martinsburg-Berkeley County Parks and Recreation** - The MBC Parks and Recreation Commission has a number of wonderful parks throughout the county which have green space, playgrounds and special events. Visit [www.mbc-parks-rec.org](http://www.mbc-parks-rec.org) for more information on the various parks and special events.





# Transportation

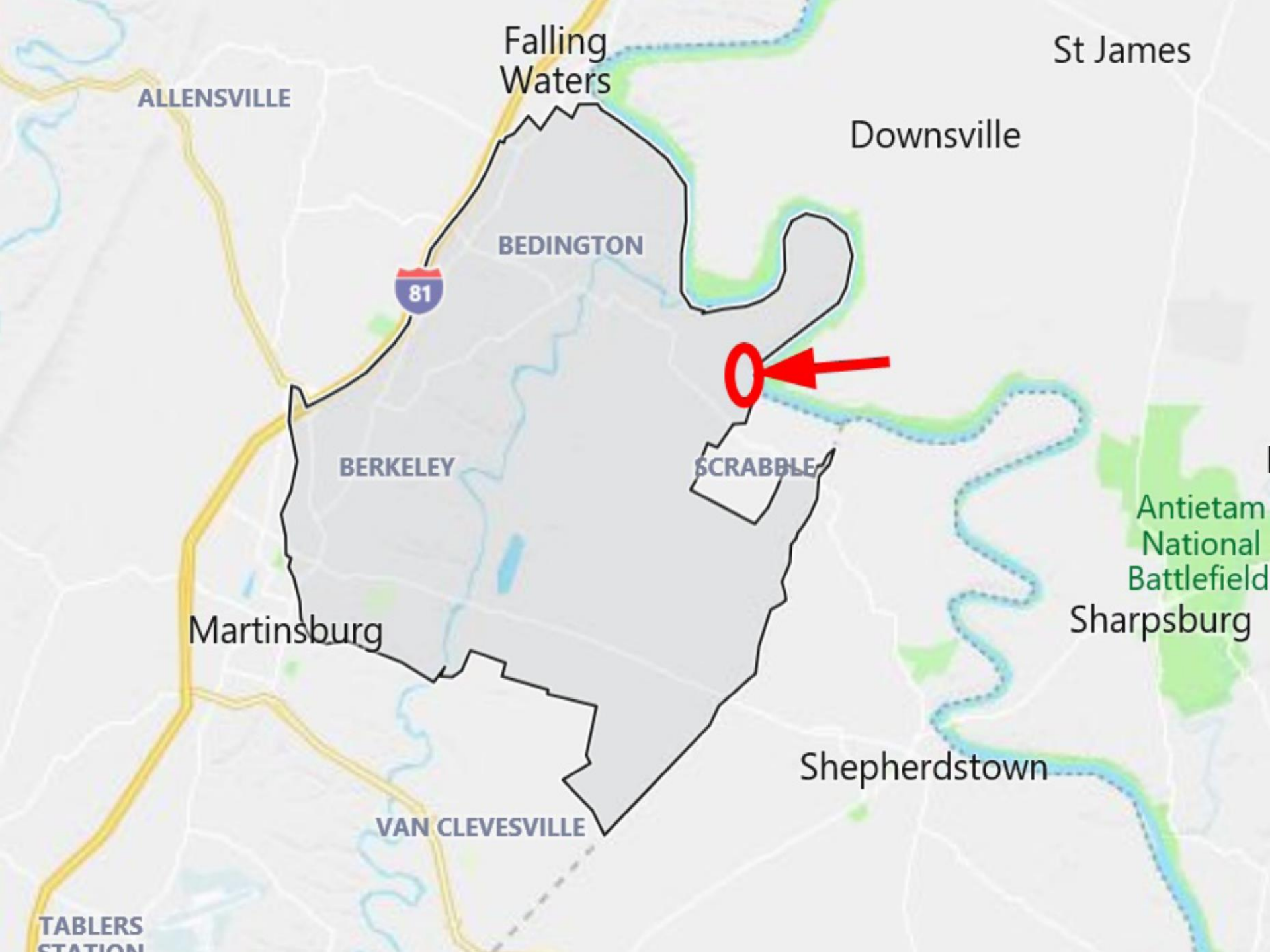
- **Highways Serving Area:** I-81, I-70, US-11, WV-9, WV-45, WV-51
- **Railroads:** Amtrak, CSX, MARC (2 commuter trains to Washington Union Station and 3 returning trains each day), Winchester & Western.
- **Bus Service:** Eastern Panhandle Transit Authority (PanTrati-local service)
- **Airports:** Eastern West Virginia Regional Airport (MIRE) 7 miles, easy access to Dulles International Airport (LAD) 50 miles, Baltimore-Washington International Airport (BWI), Reagan National Airport (DCA), Washington County Airport (HGR), Potomac Airpark 15 miles, and Winchester Regional 20 miles.



## Major Highways

- ✓ Interstate 81
- ✓ U.S. Highway 11
- ✓ West Virginia Route 9
- ✓ West Virginia Route 45
- ✓ West Virginia Route 51
- ✓ West Virginia Route 901









ION

SCRABBLE

Shepherdstown

Ke  
Antietam  
National  
Battlefield  
Sharpsburg

ELK BRANCH

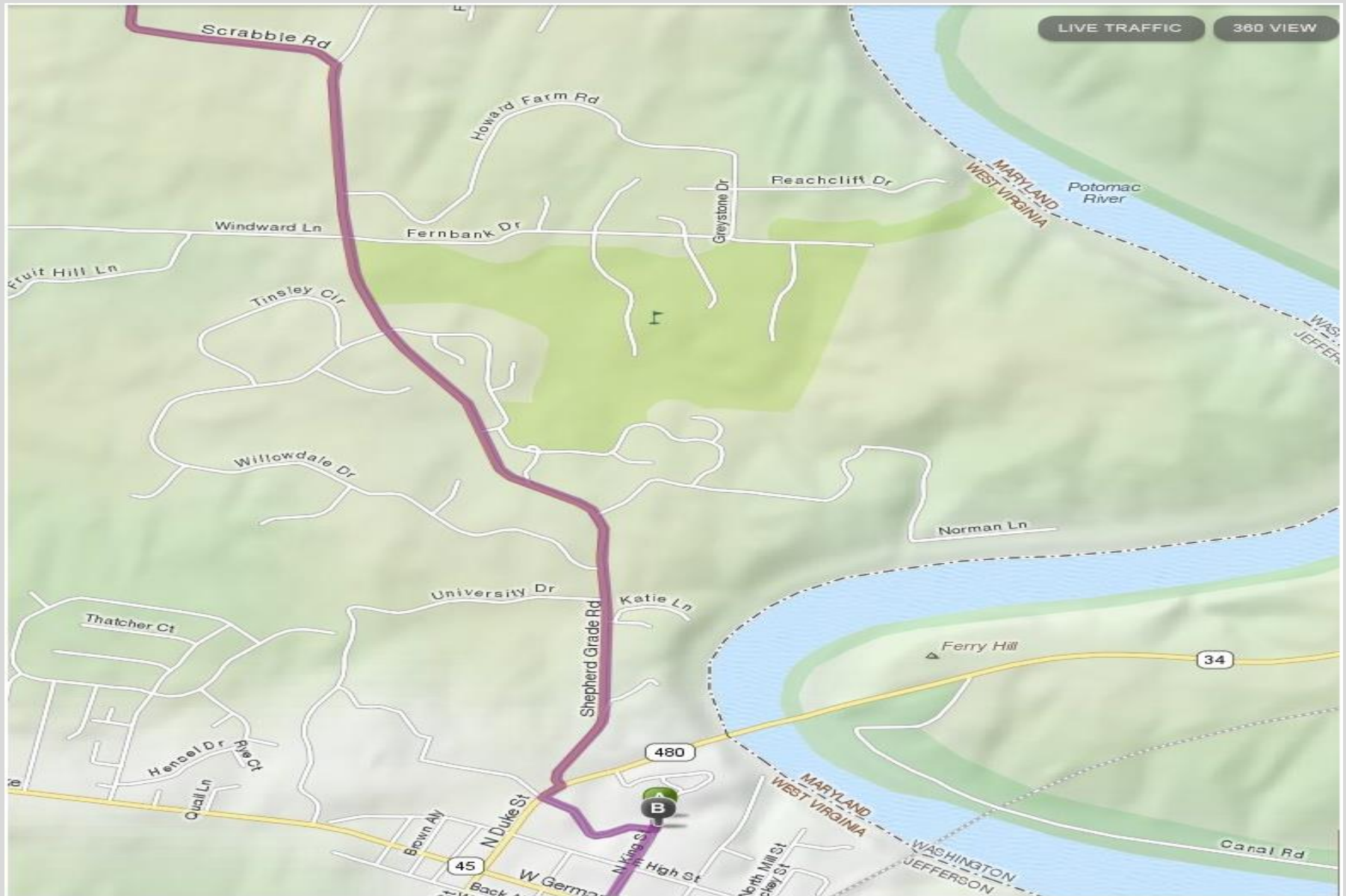
UVILLA





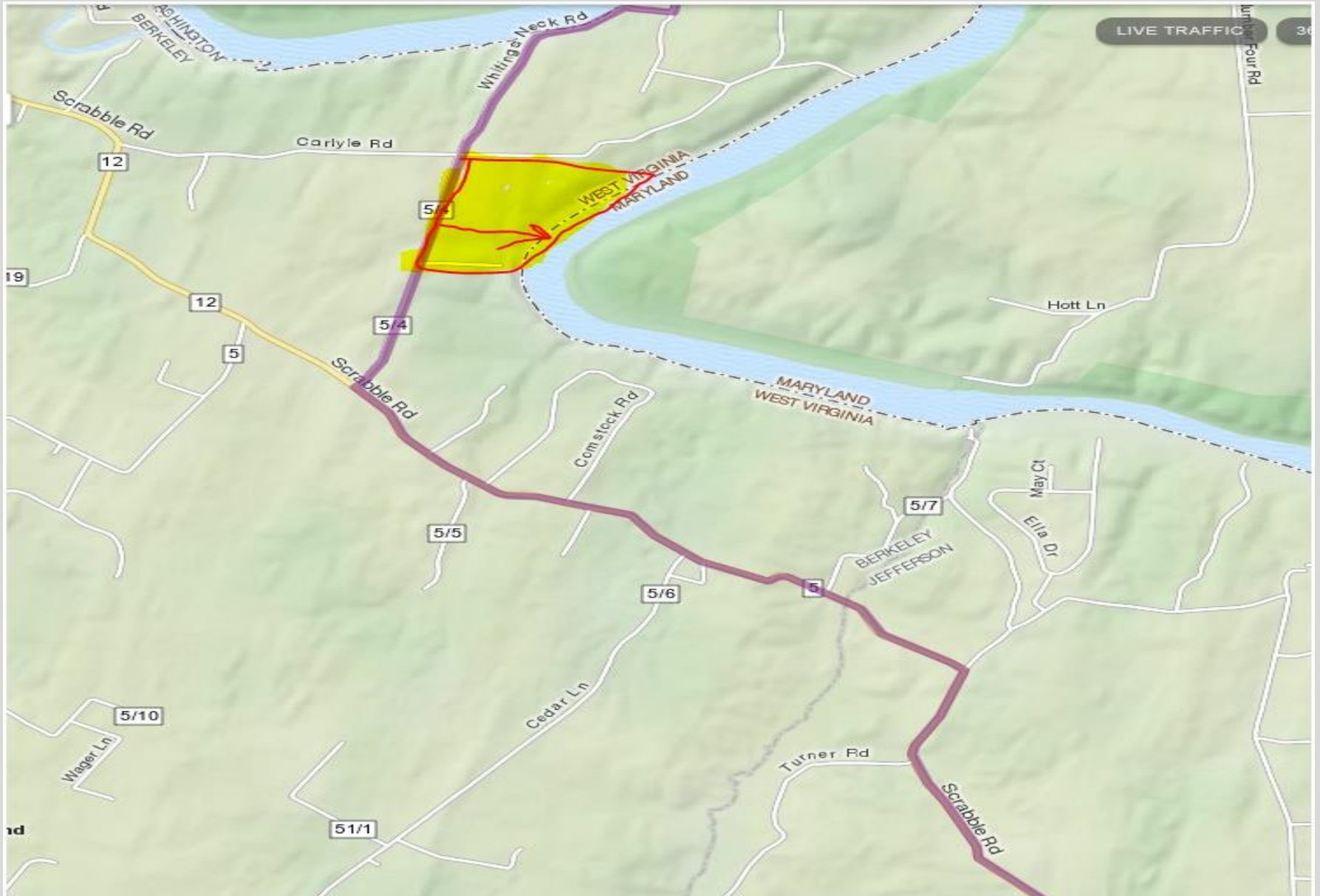


Once you reached Shepherd University, you have another 8 miles to go





You are there (red arrow)





	Highway sign		Direction from Tyson's Corner VA	Mileage, Turn to Turn	Car Mileage shows (on the way going)	Car Mileage shows (on the way coming back)			
						61.1			
1	West 7	West	LEESBURG PIKE/VA-7 W. Continue to follow VA-7 W.	17.8	0	43.3			
2			Merge onto VA-7 W toward WARRENTON/WINCHESTER.	6.1	17.8	37.2			
3	RAMP		Take the VA-9 ramp toward HILLSBORO/CHARLES TOWN W VA.	0.2	23.9	37			
4	9	R	CHARLES TOWN PIKE/VA-9.	9.8	24.1	27.2			
5	671	R	HARPERS FERRY RD/VA-671.	7.6	33.9	19.6			
6	South 340	L	JEFFERSON PIKE/US-340. Continue to follow US-340 S (Crossing into WEST VIRGINIA).	4.4	41.5	15.2			
7	230	R	WV-230/SHEPHERDSTOWN PIKE.	0.2	45.9	15			
8	230	L	SHEPHERDSTOWN PIKE/WV-230. Continue to follow WV-230.	8.8	46.1	6.2			
9	230	R	S PRINCESS ST/WV-230.	0.1	54.9	6.1	University Town		
10	230	R	E GERMAN ST/WV-230.	0.1	55.0	6	Shepherd University; 301 N King St, Shepherdstown, WV 25443 ; (304) 876-5000		
11		L	N. Duke st	0.2	55.1	5.8	1st class restaurant & Gold course		
12		L	Shapherd Grade	1.7	55.3	4.1			
13		L	Shapherd Grade	1.9	57.0	2.2			
14		R	Scrabble Rd	1.6	58.9	0.6			
15		R	Whitings Neck Rd	0.6	60.5	0			
					61.1				



# Directions from Maryland

1. Take I-70 W. toward Hagerstown.
2. Take I-81 North and South exit – Exit 26 toward Harrisburg/Roanoke.
3. Merge onto I-81 South via the exit on the left toward Roanoke.
4. Take WV-901/Spring Mills Rd. Exit 20.
5. Turn Left onto WV-901
6. Turn Right onto US\_11.
7. Turn Left onto Scrabble RD/CR-5. Continue to follow CR-5 to the end.
8. Turn left onto Berkeley Station.
9. Turn Left onto Carlyle Road.
10. The property is right on the intersection of Whitings Neck road and Carlyle rd.
11. Make Right onto Whitings Neck Rd. and park anywhere on the property on your Left.

65 Miles from Tyson's Corner VA  
30 Minutes from Fredrick MD.  
10 Minutes from Shepherdstown.  
10 Minutes from Hagerstown.

